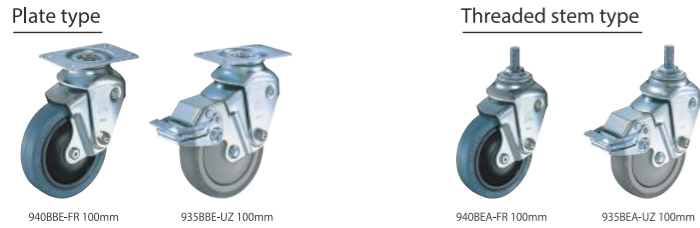


Cusion Caster / 940E series



List of Products



Viewable JP / EN / CN

Please specify cushion spring type on demand from "Spring table".

Product Code					Set load 1pc(daN)	Overall Height mm	Top Plate mm	Fitting Pitch mm
Model No.	Wheel	Size(mm)	Spring					
Swivel	940 BBE	FR	100		6 ~ 30	143~135	100×62	82×40
Swivel / Stopper	935 BBE	UZ	125		6 ~ 36	169~160		
Fixed	940 ER	FR	100		6 ~ 30	143~135	100×65	82×40
Fixed / Stopper	935 ER	UZ	125		6 ~ 36	169~160		

Spring table

Spring dia. (mm)	Set load (1pc)
2.0	6 daN
2.3	12 daN
2.6	18 daN
2.9	24 daN
3.2	30 daN
3.5	36 daN

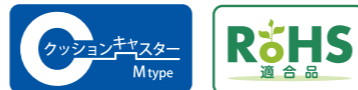
※For size 125mm only.

Product Code					Set load 1pc(daN)	Overall Height mm
Model No.	Wheel	Size(mm)	Spring	Thread		
Swivel	940 BEA	FR	100		6 ~ 30	148~140
Swivel / Stopper	935 BEA	UZ	125		6 ~ 36	174~165

※The set load indicates the load that provides the most cushioning effect on vibration.

In need of antistatic urethane wheels, please consult our sales office.

Cushion Caster / 940M series



List of Products



Viewable JP / EN / CN

Please specify cushion spring type on demand from "Spring table".

Product Code					Set load 1pc(daN)	Overall Height mm	Top Plate mm	Fitting Pitch mm
Model No.	Wheel	Size(mm)	Spring					
Swivel	940 M	FR	100		6 ~ 50	143~135	100×62	82×40
Swivel / Stopper	935 M	UZ	125		6 ~ 50	169~160		
Fixed	940 MR	FR	100		6 ~ 50	143~135	100×65	82×40
Fixed / Stopper	935 MR	UZ	125		6 ~ 50	169~160		

Spring table

Spring dia. (mm)	Set load (1pc)
2.0	6 daN
2.3	12 daN
2.6	18 daN
2.9	24 daN
3.2	30 daN
3.4	40 daN
3.8	50 daN

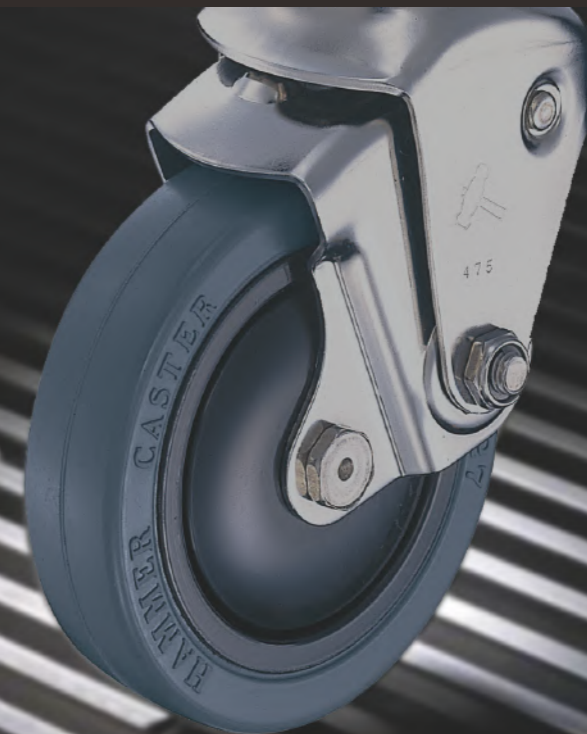
※Please consult our sales office for details.

Product Code					Set load 1pc(daN)	Overall Height mm
Model No.	Wheel	Size(mm)	Spring	Thread		
Swivel	940 MA	FR	100		6 ~ 50	144~136
Swivel / Stopper	935 MA	UZ	125		6 ~ 50	170~161

※The set load indicates the load that provides the most cushioning effect on vibration.

In need of antistatic urethane wheels, please consult our sales office.

Travel like seamless
Cusion Caster 940 series



Manufacturing Factory
Headquarters factory
 4-7-35, Nishi-Iwata, Higashi-Osaka, Osaka 578-0947 Japan
Hirakata factory
 3-2-1, Shodaidajikka, Hirakata, Osaka 573-1132 Japan

HAMMER CASTER SALES

Hammer Caster Sales Co., Ltd. (as Sales company)
Tokyo Branch
 6-5-4, Shimbashi, Minato-ku, Tokyo 105-0004 Japan
Osaka Branch
 1-2-6, Aramoto, Higashi-Osaka, Osaka 577-0023 Japan

Please feel free to ask for any caster consultancy.
 E-mail : info@hammer-caster.co.jp
 Web : www.hammer-caster.com

Click and follow our official SNS accounts.



www.facebook.com/hammercasterofficial/



www.instagram.com/hammer_caster_official/

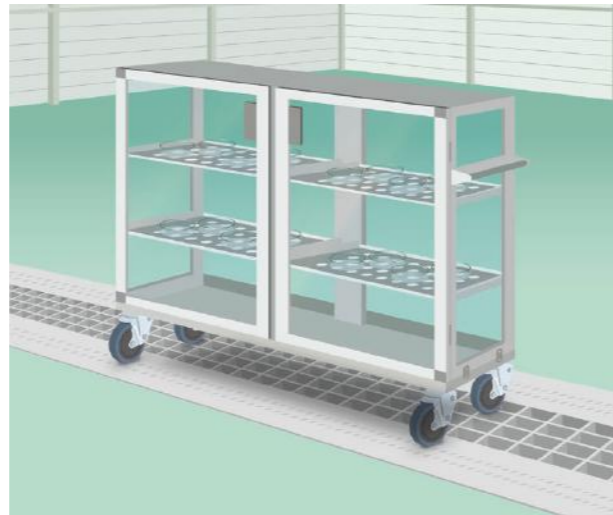
Keep calm from rattling and noise.

The cushion by the built-in spring gently protects precious goods from vibration while driving.

Cushion caster protects precious goods

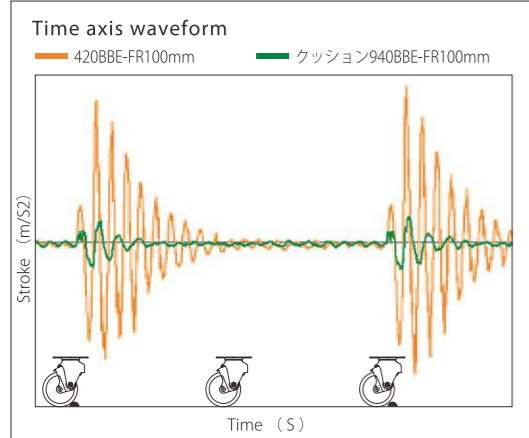
from rattling and damages.

- Selecting the built-in spring on demand can provide the cushioning effect in a wide range of applications.
- Suitable for use in precision equipment, medical equipment and semiconductor facilities.
- The vibration acceleration is about 1/10 of that of general-purpose products, and it is also useful on uneven surfaces such as asphalt and tile roads.



Comparison of vibration acceleration

General caster (420) / Cushion caster (940)



Spring table

Please specify cushion spring on demand from "Spring table".

● 940E series

Cone spring dia.	Set load(1pc)
	daN
φ 2.0mm	6
φ 2.3mm	12
φ 2.6mm	18
φ 2.9mm	24
φ 3.2mm	30
φ 3.5mm	36

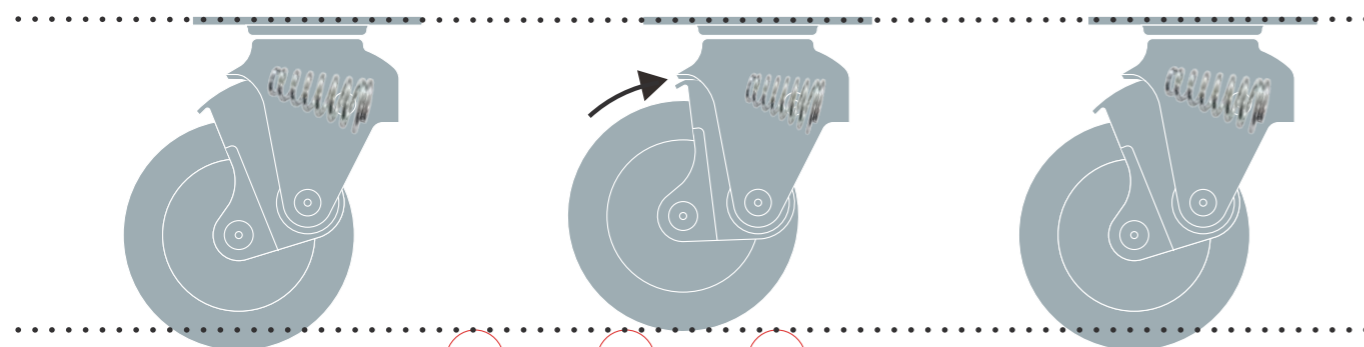
● 940M series

Cone spring dia.	Set load(1pc)
	daN
φ 2.0mm	6
φ 2.3mm	12
φ 2.6mm	18
φ 2.9mm	24
φ 3.2mm	30
φ 3.4mm	40
φ 3.8mm	50

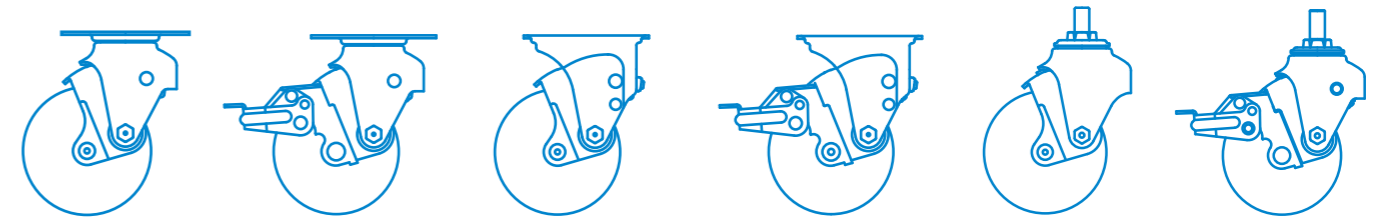
※*φ3.5mm (36daN) is for size 125mm only.

■ The set load indicates the load that provides the most cushioning effect on vibration.

Motion image

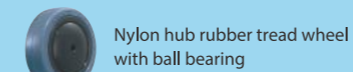


- Fitting types are plate type & threaded stem type.
- Wheel materials are rubber & urethane and wheel sizes are 100mm & 125mm.
- Ball bearing is installed to wheel bore, which provides smooth and stable travelling.



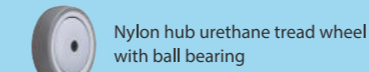
Wheels

【FR : Rubber】



- Ideal for environments requiring cushioning properties.
- Stable to run easily on uneven surfaces.
- Ball bearing is installed to wheel bore and the wheel revolving is very smooth.

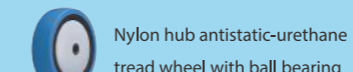
【UZ : Urethane】



- Tread made of urethane that softens by heating and hardens by cooling and has non-marking property.
- Excellently resistant to oil, wearing and low temperature.
- Ball bearing is installed to wheel bore and the wheel revolving is very smooth.

Antistatic wheels

【Antistatic urethane】



- UZ wheel also has antistatic type that can prevent static damage and dust absorption.
 - The volume resistivity of antistatic wheel is [$1 \times 10^7 \Omega \sim 10^8 \Omega \text{ cm}$].
- Note) The allowable load should be about 60% of normal wheels. Please consult our sales office for details.

Fitting example images

Automatic Following Cart



Other options

SUS オールステンレス キャスター

Excellent resistant to corrosion and water, all stainless steel type is available. Please consult our sales office for more details.



■ Scan below QR code to view our instruction video for Cushion Caster.

